



Installation & Training

CONGRATULATIONS ON YOUR PURCHASE OF POOLPUP™

You have taken the first step in gaining peace of mind for you and your family by preventing the accidental drowning of your dog. It's not a matter of "if" your dog falls into the pool...it's a matter of "when" your dog falls into the pool. PoolPup™ by itself won't do it, but with some training your dog will master the PoolPup™ exit.

All you need is a drill, no assembly is necessary. Remove PoolPup™ from the box, find the enclosed pins and drill bit and set aside.

Select an appropriate site at the deep end of the pool. Your dog is most likely to be in trouble if he or she falls in the water in this area.

Make sure that once your dog climbs out he or she has somewhere safe to land. A flower pot or chair will prevent your dog from reaching a safe place and may cause the dog to fall back in the pool. Likewise a very narrow surface may be hazardous for your dog. **Do not locate PoolPup™ near the skimmer.**

If you have a spa and are using a PoolPup™ do not place PoolPup™ on the side of the spa that faces the pool.

The important part of placement is that your dog has a wide, easy place to exit.

Now that you've found a place to locate your PoolPup™, position the top of PoolPup™ in the proper place and check to see that it can hang down in the pool and that the screws in the bottom of PoolPup™ can reach the sides of the pool.

Mark the two pre-drilled holes on the deck surface of your pool.

Remove the PoolPup™ and using the enclosed drill bit, **bore holes to the depth of the enclosed pins.**

Reposition the PoolPup™ and insert the pins. If the pins stick above the PoolPup™ remove and drill the hole further.

Now you can extend the TWO NYLON screws UNTIL THEY MAKE CONTACT WITH THE WALL OF THE POOL OR SPA so that PoolPup™ hangs vertically not at an angle.

Removal of the PoolPup™ for cleaning or winterizing is simple. Simply lift the PoolPup™

out of the water. Be sure to properly store the pins for future use. We suggest simply putting the pins back in the holes in your pool deck for the winter or taping them to the PoolPup™ itself.

Warranty Information: PoolPup™ is covered by a 12 month limited warranty for manufacturing defects. This warranty covers only those activities for the intended use of the product as a pet step. Not intended for human use.

NOW YOU CAN BEGIN TRAINING YOUR DOG.

It is easiest if you have a partner in this process. One of you should be in the pool with the dog and one on the side of the pool at the exit of the PoolPup™. Your partner should call your dog with a favorite treat (we use small sliced chunks of hot dogs...not very good for dogs, but our dogs, Chad and Letty, love them). Have your partner with the treats call the dog and give a treat upon climbing up PoolPup™ and out of the pool.

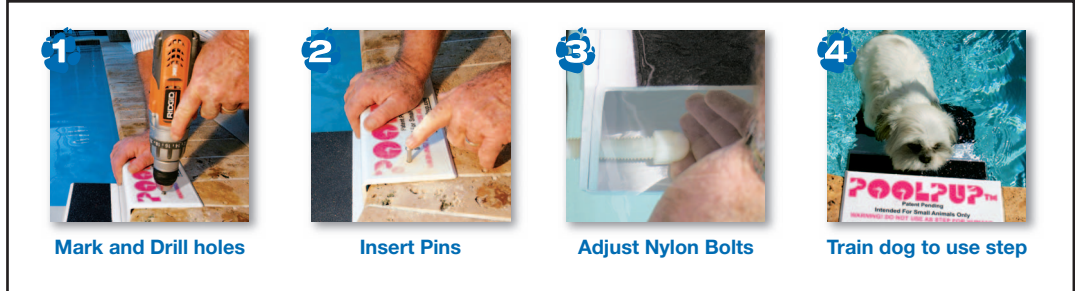
where the PoolPup™ is located and how to use it in your absence. Now you can rest assured your dog will be PoolPup™ savvy, and if they fall in the pool without you there, they will get out on their own.

DO'S AND DON'TS

Do not leave anything in the pool such as noodles, lounges or anything that might block your dog's access to PoolPup™.

Do not leave your dog unattended if your spa is turned on, as turbulence created by the jets may prevent your dog from reaching the safety of PoolPup™.

Do not ever change PoolPup's™ location, once your dog is trained to use it. Dogs do not navigate by sight. They use other senses and they will not realize it has moved and will drown before they are able to find the new location. I repeat: Do not move the PoolPup™. We have found our dogs, Chad and Letty, in the darkest night go directly to the PoolPup™. If we move it



First, place the dog on the bottom step of PoolPup™ and let it climb up. Next, place your dog in the pool a foot or so away from PoolPup™ and let it swim to PoolPup™ and climb out.

Once your dog catches on, repeat the process by extending the distance each time by a couple of feet until your dog can do it from the farthest distance in the pool. If your dog gets too tired, let it rest and repeat the training process later.

Repeat this exercise several days in a row. Once you feel your dog is confident about PoolPup's™ location and can swim to it easily and climb out, gently toss your dog into the water, without someone calling your dog and see if your dog exits successfully.

We are sure if you follow this procedure, you will have successfully trained your dog to know

they go to the old location. If for whatever reason you have to move PoolPup™, be sure to retrain your dog.

For more information and additional training assistance visit us at:

www.poolpup.com



PoolPup Marketing
16 S. Palm Avenue
Sarasota, FL 34236

314.898.2538
email us at: info@poolpup.com

*For dogs up to 50 lbs. Not for use by humans.

Made in USA